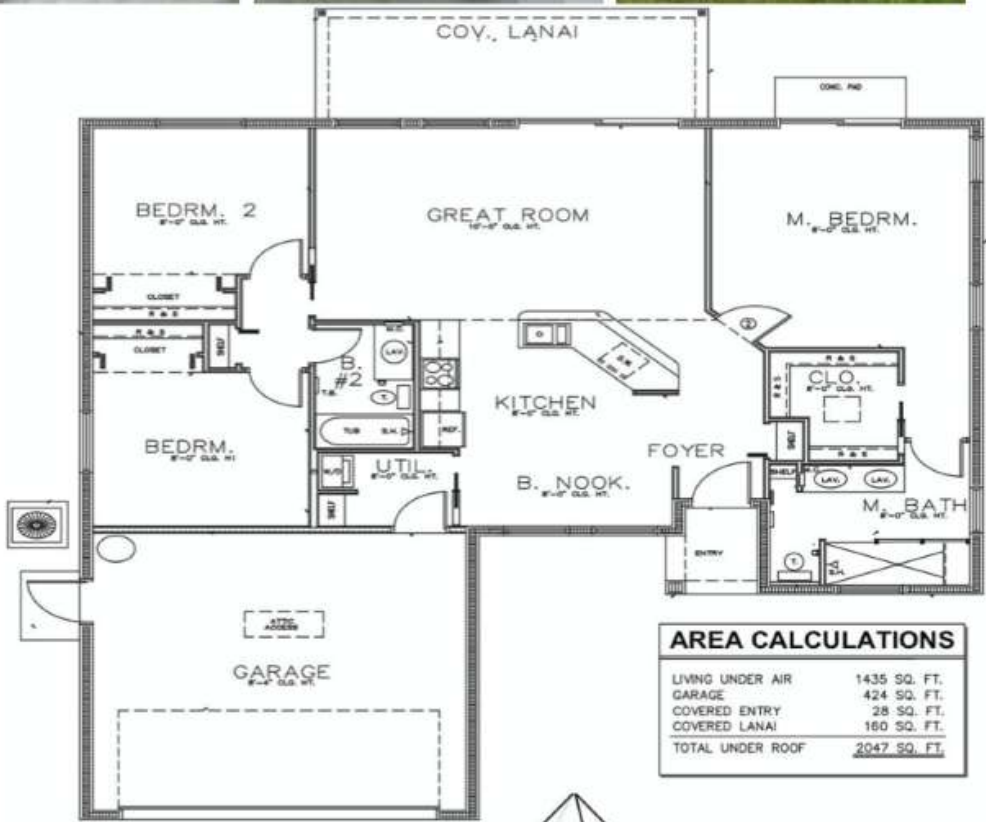




HOUSE FEATURES

- 9'4" tie beam
- Brick paver
- Shingle Roof
- Hurricane impact windows
- Custom wood cabinets
- Upgraded Granite countertop
- Stainless steel Appliances
- Moen plumbing trim
- Tile Flooring all around
- Sprinkler and landscaping
- Irrigation System
- 5 ½ baseboard



AREA CALCULATIONS	
LIVING UNDER AIR	1435 SQ. FT.
GARAGE	424 SQ. FT.
COVERED ENTRY	28 SQ. FT.
COVERED LANAI	160 SQ. FT.
TOTAL UNDER ROOF	2047 SQ. FT.

Sales Office:
GalexDiamond
Cardezzone@galexainc.com
 +1 (917) 375-6527
Bludwig@galexainc.com
 +1 (239) 675-9191
www.galexahomes.com



1325 SE 47th St
 Cape Coral, FL, 33904
 DIAMOND GULF CONSTRUCTION, LLC